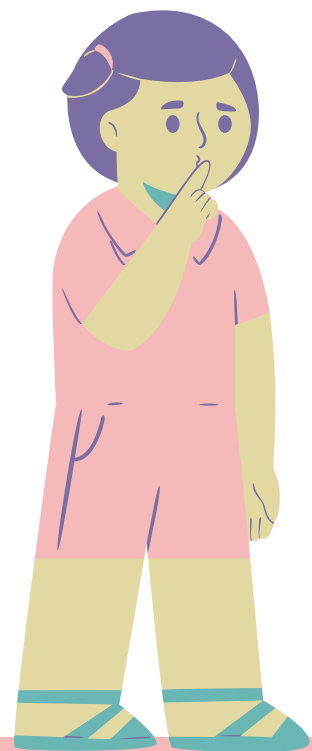
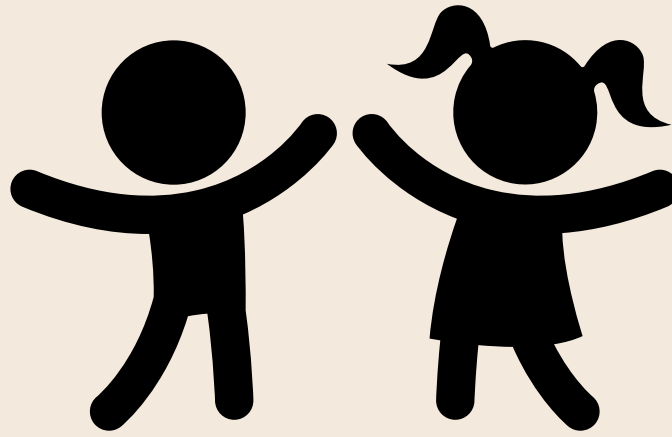


Cyflwyniad i ADY

Introduction to ALN





BETH YW ADY? WHAT IS ALN?

ANGHENION DYSGU YCHWANEGOL

ADDITIONAL LEARNING NEEDS

‘A person has additional learning needs if he or she has a learning difficulty or disability (whether the learning difficulty or disability arises from a medical condition or otherwise) which calls for additional learning provision.’

The ALNET Wales Act 2018



Additional learning needs (“ALN”) can affect a child or young person’s ability to learn. For example, someone’s ALN might affect their:

- reading and writing
- ability to understand things
- behaviour or ability to socialise and communicate
- concentration levels
- physical ability

Gall anghenion dysgu ychwanegol (“ADY”) effeithio ar allu plentyn neu berson ifanc i ddysgu. Er enghraifft, gall ADY gael effaith ar eu:

- darllen ac ysgrifennu
- y gallu i ddeall pethau
- ymddygiad neu allu i gymdeithasu a chyfathrebu
- lefelau canolbwyntio
- gallu corfforol

Deciding ALN or NOT?



1. Do they have a learning difficulty or disability?

A child or young person has a learning difficulty or disability if:

- they have significantly greater difficulty in learning than the majority of others of the same age, or
- they have a disability for the purposes of the Equality Act 2010 which prevents or hinders him or her from making use of facilities for education or training of a kind generally provided for others of the same age in mainstream maintained schools or mainstream institutions in the further education sector.
- A child under compulsory school age has a learning difficulty or disability if he or she is, or would be if no additional learning provision were made

Penderfynu ar ADY neu beidio?

1. Oes ganddyn nhw anabledd neu anhawster dysgu?

Mae gan berson ifanc anabledd neu anhawster dysgu os:

- maen nhw'n cael cryn dipyn yn fwy o anhawster dysgu na'r rhan fwyaf o bobl eraill o'r un oed, neu
- mae ganddyn nhw anabledd at ddibenion Deddf Cydraddoldeb 2010 sy'n eu hatal neu'n eu rhwystro rhag defnyddio cyfleusterau ar gyfer addysg neu hyfforddiant o fath a ddarperir yn gyffredinol ar gyfer pobl eraill o'r un oed mewn ysgolion prif ffrwd, neu sefydliadau prif ffrwd yn y sector addysg bellach
- Mae gan blentyn o dan oed ysgol gorfodol anabledd neu anhawster dysgu os yw'n debygol y bydd ef neu hi yn dod o dan un neu'r ddau o'r pwyntiau bwled uchod pan fydd yn cyrraedd oed ysgol gorfodol, neu byddai ef neu hi pe na bai darpariaeth ddysgu ychwanegol yn cael ei gwneud.

Deciding ALN or NOT?

2. Does that learning difficulty or disability call for additional learning provision (ALP) to be made?

Additional Learning Provision for over three's means educational or training provision that is additional to, or different from, that made generally for others of the same age. This is a wide definition, and could cover a wide range of things, for example:

- needing regular one-to-one support
- physical, communication or sensory support
- communicating through sign language
- needing small class sizes with specialist support
- requiring support from a specialist teacher

ALP is described as provision which is 'additional to, or different from', that made generally for others of the same age in mainstream maintained schools.



Penderfynu ar ADY neu beidio?

2. A yw'r anabledd neu'r anhawster dysgu hwnnw'n galw am ddarpariaeth ddysgu ychwanegol?

(A3(1) o'r Ddeddf) (Pennod 2 o'r Cod ADY)

Mae Darpariaeth Ddysgu Ychwanegol ar gyfer plant dros dair oed yn golygu darpariaeth addysgol neu hyfforddiant sy'n ychwanegol at, neu'n wahanol i'r hyn a wneir yn gyffredinol ar gyfer eraill o'r un oed. Mae hwn yn ddiffiniad eang, a gallai gwmpasu ystod eang o bethau, er enghraifft:

- angen cymorth un-i-un rheolaidd
- cymorth corfforol, cyfathrebu neu synhwyrdd
- cyfathrebu drwy iaith arwyddion
- angen dosbarthiadau bach gyda chymorth arbenigol
- angen cefnogaeth gan athro arbenigol

Disgrifir Darpariaeth Ddysgu Ychwanegol fel darpariaeth sy'n 'ychwanegol at, neu'n wahanol' i'r hyn a wneir yn gyffredinol ar gyfer eraill o'r un oed mewn ysgolion prif ffrwd a gynhelir.



How do we decide?

PCP

Person-Centred Planning Meeting

To gain the views of:

- the learner
- parents or carers
- the school
- specialists from the LA
- specialists from outside agencies

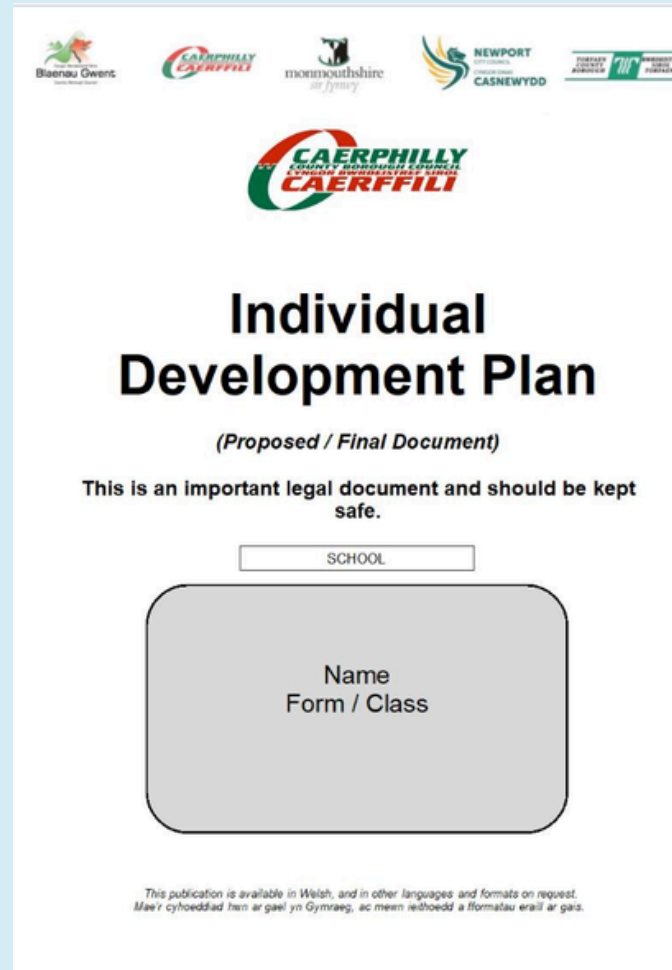
Sut ydyn ni'n penderfynu?

CCU

Cyfarfod Cynllun Canolig i'r Unigolyn

I dderbyn barn:

- y dysgwr
- rhieni neu ofalwyr
- yr ysgol
- arbenigwyr y sir
- arbenigwyr asiantaethau allanol



Individual Development Plan (IDP)

The IDP is a legal document which describes a child or young person's additional learning needs, the support they need, and the outcomes they would like to achieve.

Cynllun Datblygu Unigol (CDU)

Dogfen gyfreithiol yw'r CDU sy'n disgrifio anghenion dysgu ychwanegol plentyn neu berson ifanc, y cymorth sydd ei angen arnyn nhw a'r canlyniadau yr hoffent eu cyflawni.

What if the learner does not have an ALN?

Beth os nac oes ADY gan y dysgwr?

Don't worry! Peidiwch a phoeni!



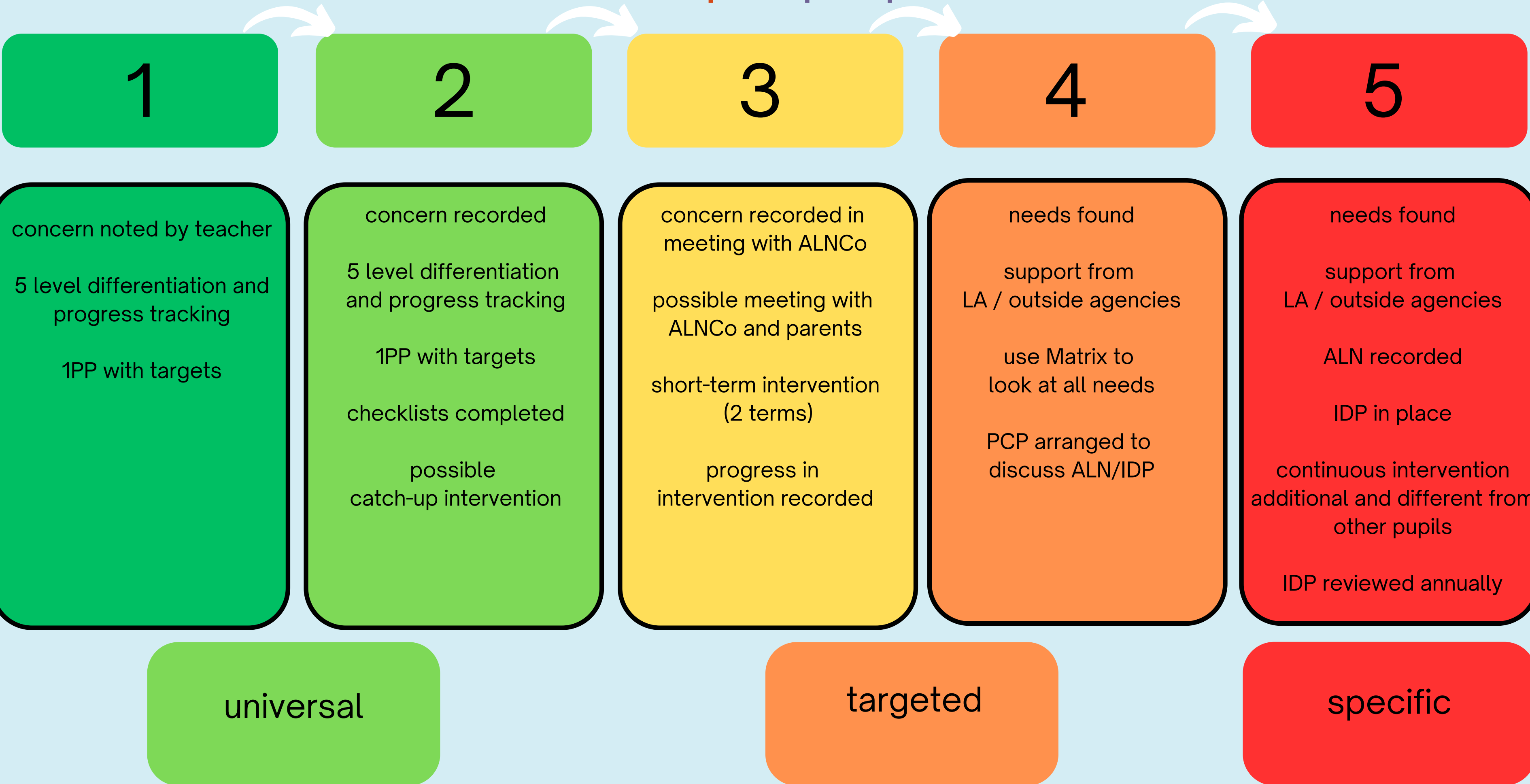
In Ysgol Penalltau:

- every pupil is tracked for progress in all areas
- every pupil has a one-page profile and targets
- pupils can get access to interventions and support without having an ALN/IDP

Yn Ysgol Penalltau:

- mae pob plentyn yn cael eu tracio am gynnydd ymhob maes
- mae gan bob plentyn proffil un Dudalen a thargedau
- Gall ddisgyblion gael mynediad i ymyraethau a chefnogaeth heb ADY/CDU

Provision Map - Map Darpariaeth



Diolch!

Any questions? Unrhyw gwestiynau?

