

Ffurio Llythrennau

a-y



Enw: _____

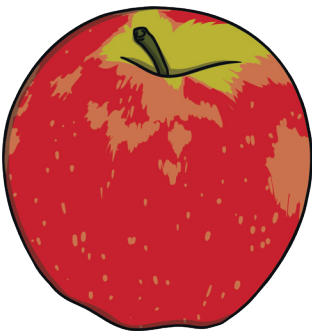
Dewch i ffurfio llythrennau

a

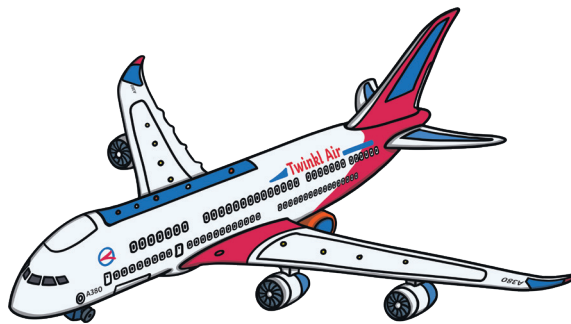
Dewch i ymarfer ffurfio 'a'.

a a a a a a a

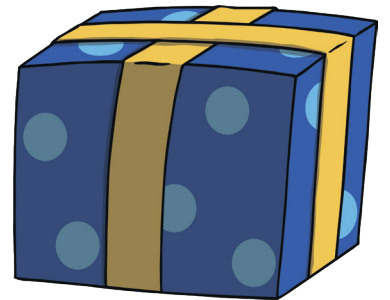
Rhowch y llythyren goll yn y bwlch.



___fal



___wyren

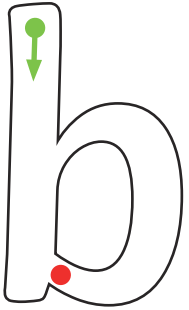


___nrheg

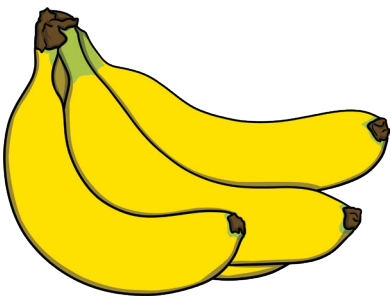
Dewch i ffurfio llythrennau

b

Dewch i ymarfer ffurfio 'b'.



Rhowch y llythyren goll yn y bwlch.



___anana



___wrdd

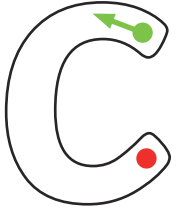


___resych

Dewch i ffurfio llythrennau

C

Dewch i ymarfer ffurfio 'c'.



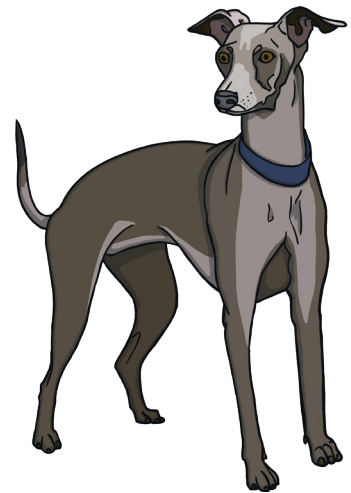
Rhowch y llythyren goll yn y bwlch.



___ath



___eg



___i

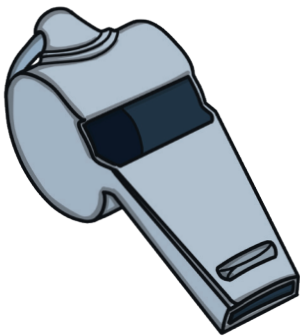
Dewch i ffurfio llythrennau

ch

Dewch i ymarfer ffurfio 'ch'.



Rhowch y llythyren goll yn y bwlch.



___wiban



___werthin



___waer

Dewch i ffurfio llythrennau

d

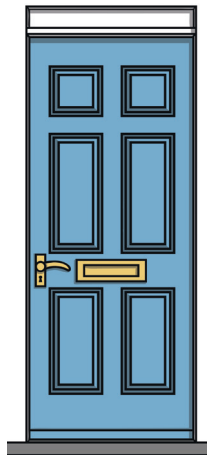
Dewch i ymarfer ffurfio 'd'.



Rhowch y llythyren goll yn y bwlch.



___ant



___rws

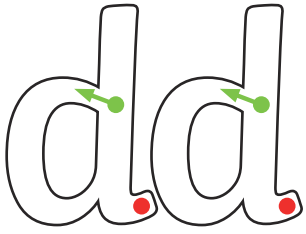


___ydd

Dewch i ffurfio llythrennau

Dewch i ymarfer ffurfio 'dd'.

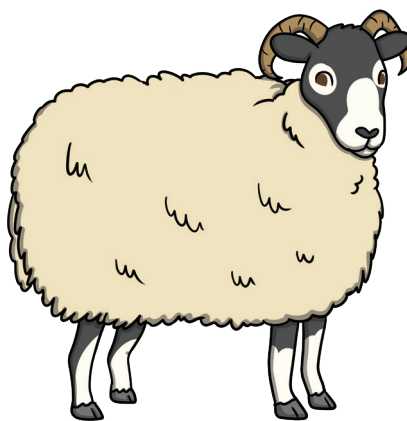
dd



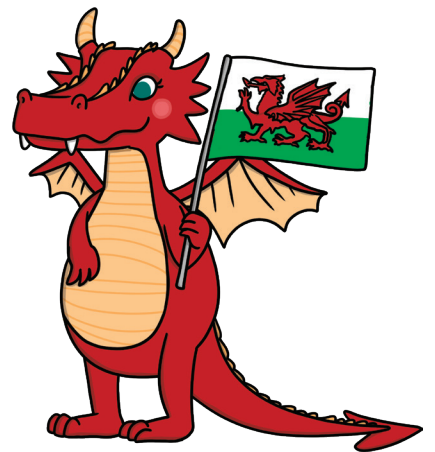
Rhowch y llythyren goll yn y bwlch.



y ___ ol



y ___ afad

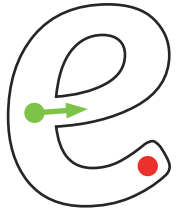


y ___ raig

Dewch i ffurfio llythrennau

e

Dewch i ymarfer ffurfio 'e'.



Rhowch y llythyren goll yn y bwlch.



___nfys



___sgid

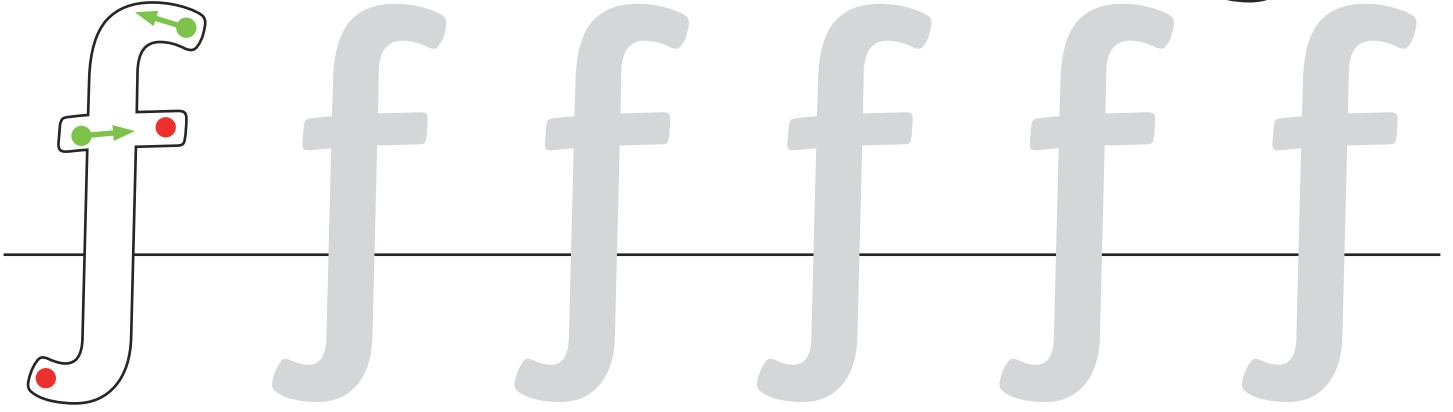


___ira

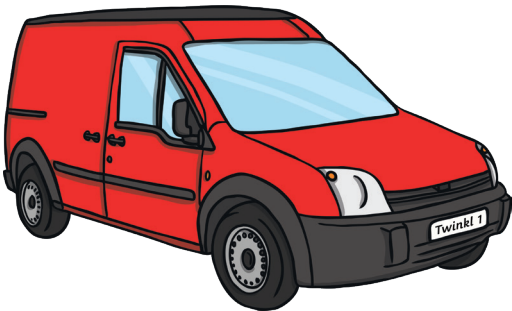
Dewch i ffurfio llythrennau

Dewch i ymarfer ffurfio 'f'.

f



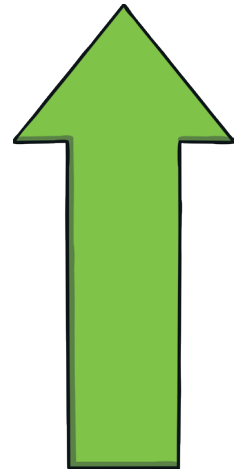
Rhowch y llythyren goll yn y bwlch.



___an



___icar

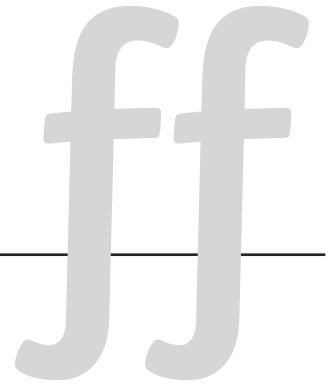
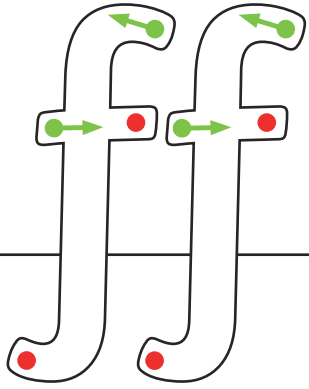


i ___yny

Dewch i ffurfio llythrennau

ff

Dewch i ymarfer ffurfio 'ff'.



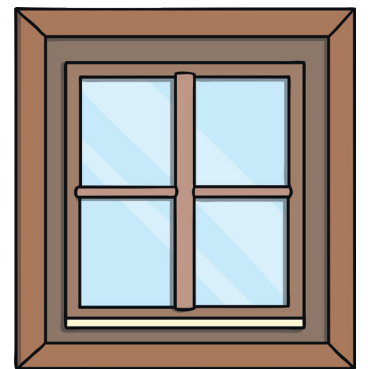
Rhowch y llythyren goll yn y bwlch.



___rind



___rwyth



___enestr

Dewch i ffurfio llythrennau

g

Dewch i ymarfer ffurfio 'g'.



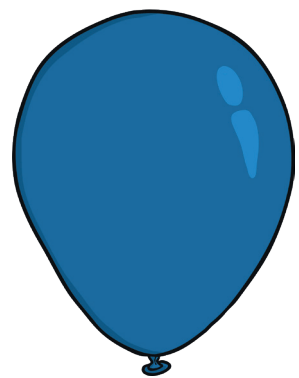
Rhowch y llythyren goll yn y bwlch.



___wynt



___law



___las

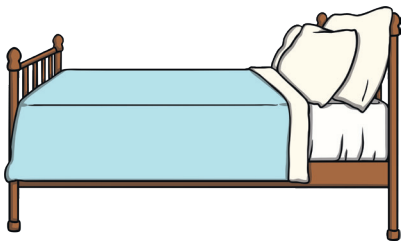
Dewch i ffurfio llythrennau

Dewch i ymarfer ffurfio 'ng'.

ng

ng ng ng ng

Rhowch y llythyren goll yn y bwlch.



fy ___wely



fy ___wallt



fy ___hath

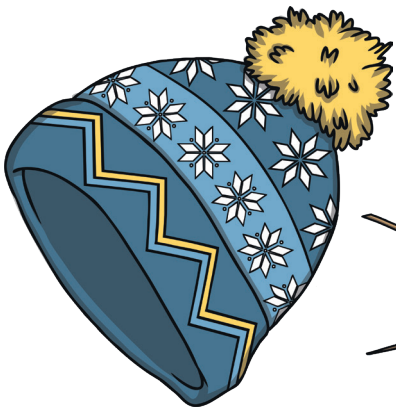
Dewch i ffurfio llythrennau

Dewch i ymarfer ffurfio 'h'.

h



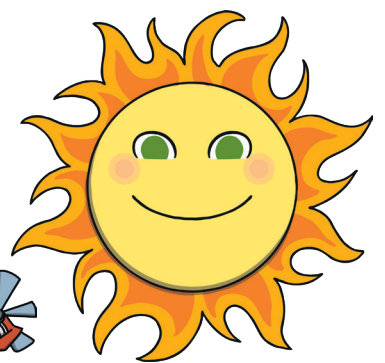
Rhowch y llythyren goll yn y bwlch.



___et



___ofrennydd

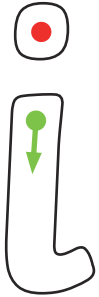


___aul

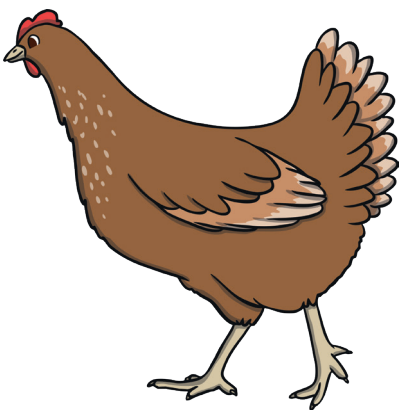
Dewch i ffurfio llythrennau

Dewch i ymarfer ffurfio 'i'.

i



Rhowch y llythyren goll yn y bwlch.



___âr



___nc



___njan dân

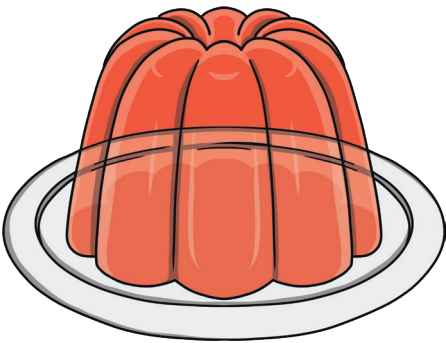
Dewch i ffurfio llythrennau

Dewch i ymarfer ffurfio 'j'.

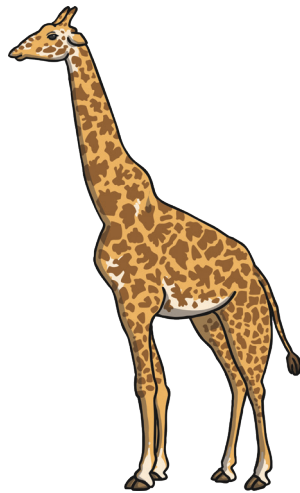
j



Rhowch y llythyren goll yn y bwlch.



___eli



___iráff



___wg

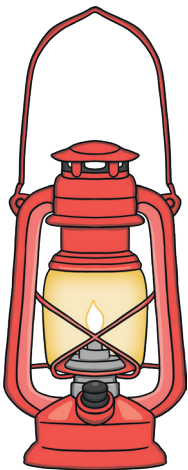
Dewch i ffurfio llythrennau

Dewch i ymarfer ffurfio 'l'.

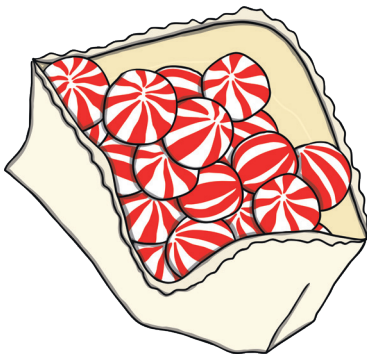
L



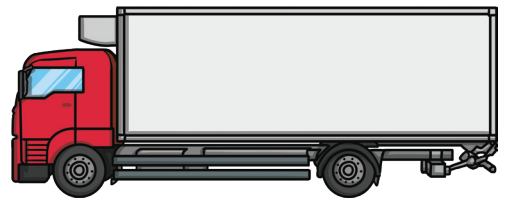
Rhowch y llythyren goll yn y bwlch.



___amp



___osin

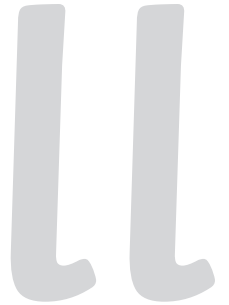
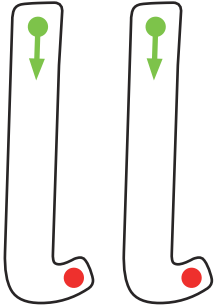


___ori

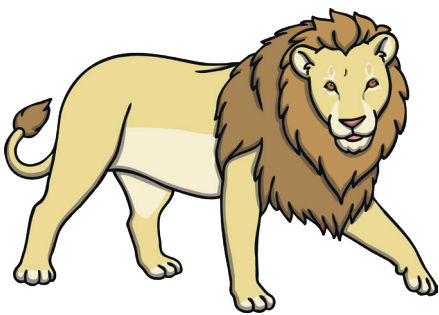
Dewch i ffurfio llythrennau

Dewch i ymarfer ffurfio 'll'.

ll



Rhowch y llythyren goll yn y bwlch.



___ew



___aeth



___euad

Dewch i ffurfio llythrennau

m

Dewch i ymarfer ffurfio 'm'.



Rhowch y llythyren goll yn y bwlch.



___elyn



___wn-ci



___ynydd

Dewch i ffurfio llythrennau

n

Dewch i ymarfer ffurfio 'n'.



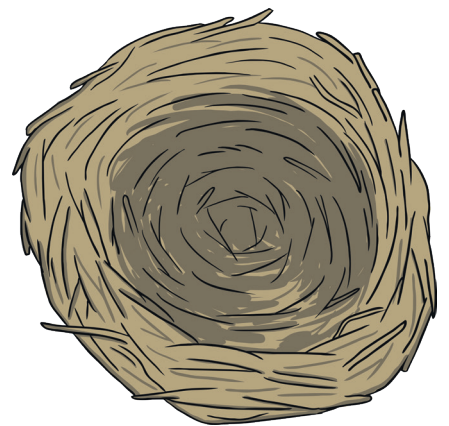
Rhowch y llythyren goll yn y bwlch.



___aw



___os

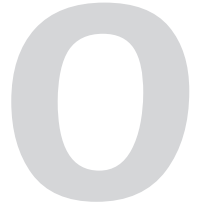
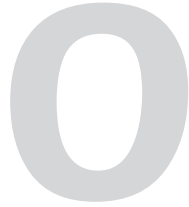
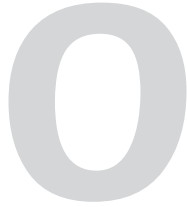
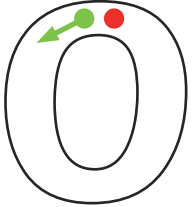


___yth

Dewch i ffurfio llythrennau

O

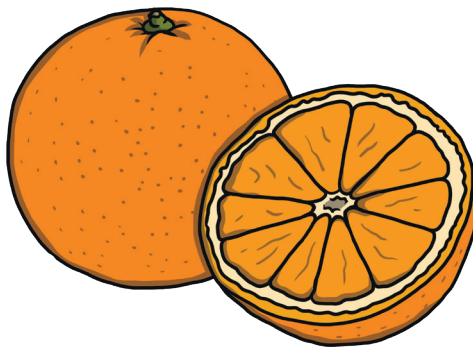
Dewch i ymarfer ffurfio 'o'.



Rhowch y llythyren goll yn y bwlch.



___gof



___ren



___lwyn

Dewch i ffurfio llythrennau

p

Dewch i ymarfer ffurfio 'p'.



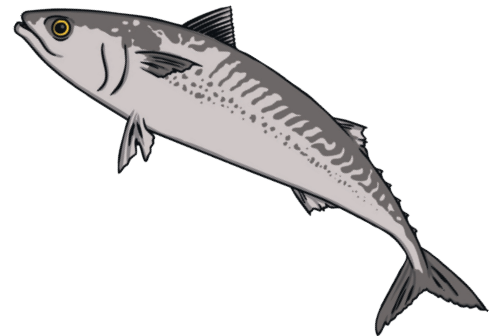
Rhowch y llythyren goll yn y bwlch.



___arc



___ont



___ysgodyn

Dewch i ffurfio llythrennau

ph

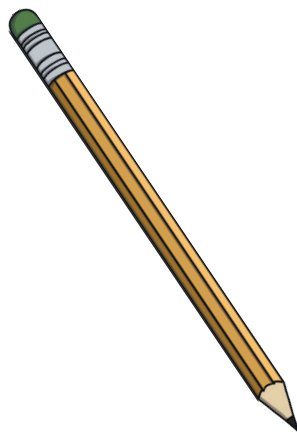
Dewch i ymarfer ffurfio 'ph'.



Rhowch y llythyren goll yn y bwlch.



ei ___ en



ei ___ ensil

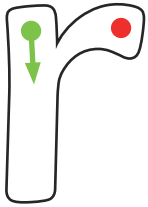


ei ___ êl

Dewch i ffurfio llythrennau

r

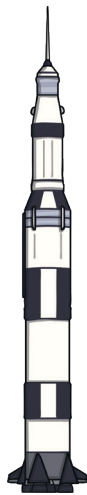
Dewch i ymarfer ffurfio 'r'.



Rhowch y llythyren goll yn y bwlch.



___as



___oced



___adio

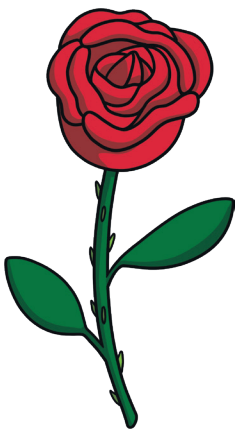
Dewch i ffurfio llythrennau

rh

Dewch i ymarfer ffurfio 'rh'.

rh rh rh rh

Rhowch y llythyren goll yn y bwlch.



___osyn



___edeg

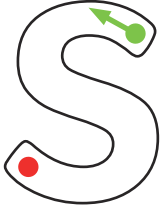


___uban

Dewch i ffurfio llythrennau

S

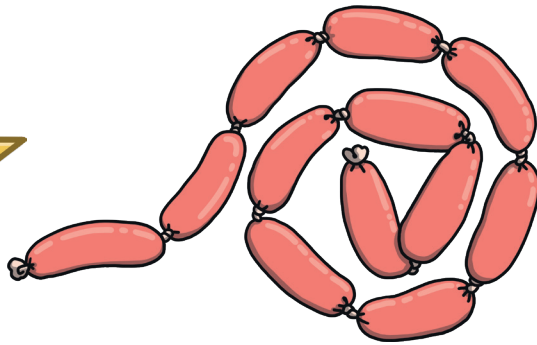
Dewch i ymarfer ffurfio 's'.



Rhowch y llythyren goll yn y bwlch.



___eren



___elsig

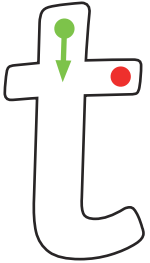


___ws

Dewch i ffurfio llythrennau

t

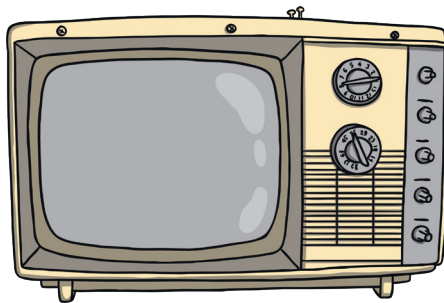
Dewch i ymarfer ffurfio 't'.



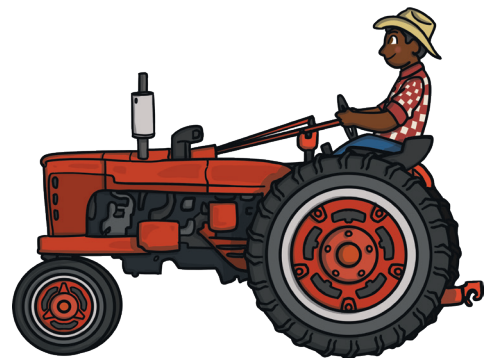
Rhowch y llythyren goll yn y bwlch.



___edi



___eledu

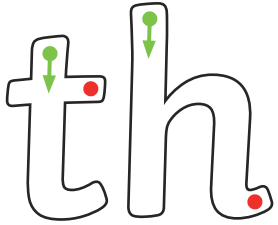


___ractor

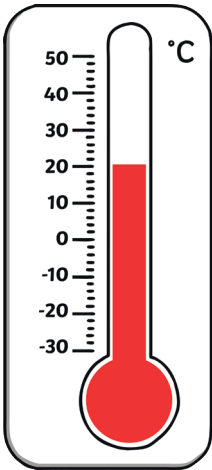
Dewch i ffurfio llythrennau

th

Dewch i ymarfer ffurfio 'th'.



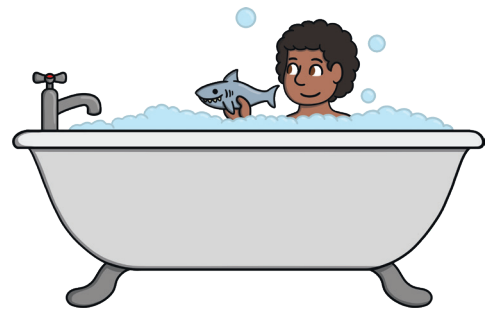
Rhowch y llythyren goll yn y bwlch.



___ermomedr



ca___



ba___

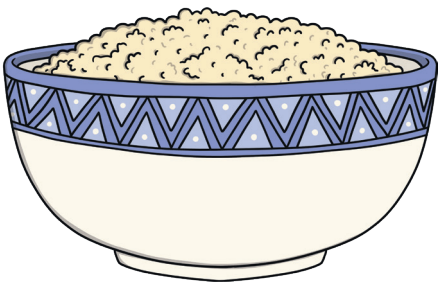
Dewch i ffurfio llythrennau

u

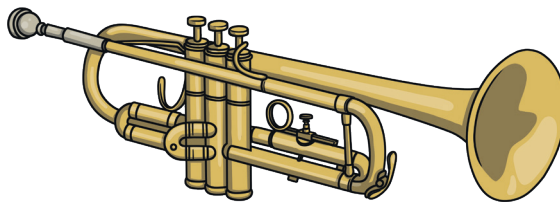
Dewch i ymarfer ffurfio 'u'.



Rhowch y llythyren goll yn y bwlch.



___wd



___tgorn



___n

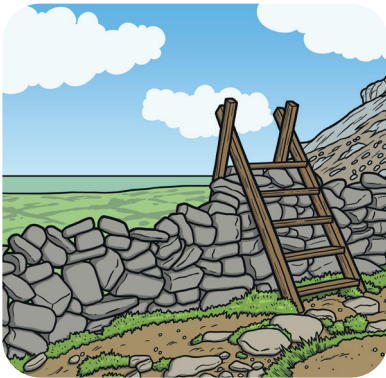
Dewch i ffurfio llythrennau

W

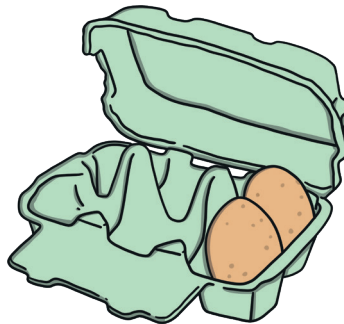
Dewch i ymarfer ffurfio 'w'.



Rhowch y llythyren goll yn y bwlch.



___al



___y



___yth

Dewch i ffurfio llythrennau

y

Dewch i ymarfer ffurfio 'y'.



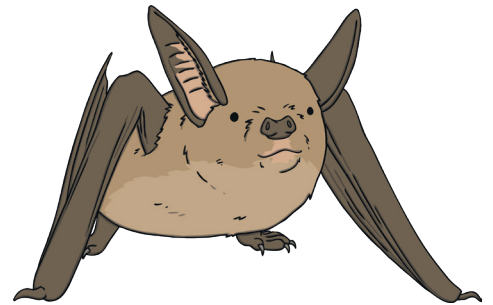
Rhowch y llythyren goll yn y bwlch.



___sgol



___nys



___stlum